

WELCOME TO DURHAM UNIVERSITY!

FROM DURHAM UCU

Who are we?

We're a trade union recognised by Durham University; we represent both academics and staff in professional services and support roles right across the university.

We want everyone - staff and students - to be treated fairly while they work and study here.

The people running the university are making that quite difficult for us though...



So far in 2025, university management have...

Threatened to make over 200 professional services staff redundant - so that's staff in colleges, librarians, IT support, cleaners - to name just a few.

Moved some of those same staff to a new building three miles out of Durham without meaningful input from them.

Cut library opening hours for students during some of the busiest periods of the year.



Staff working conditions are student learning conditions

We deserve better, and so do you.

Stand with UCU when we democratically decide to engage in industrial action to fight for better conditions for ALL of us.

Find out how we're fighting back

Instagram
[@durhamucu](https://www.instagram.com/durhamucu)

Bluesky
[@ducu.bsky.social](https://bsky.app/profile/ducu.bsky.social)

BUDGET CUTS AND REDUNDANCIES AT DURHAM UNIVERSITY

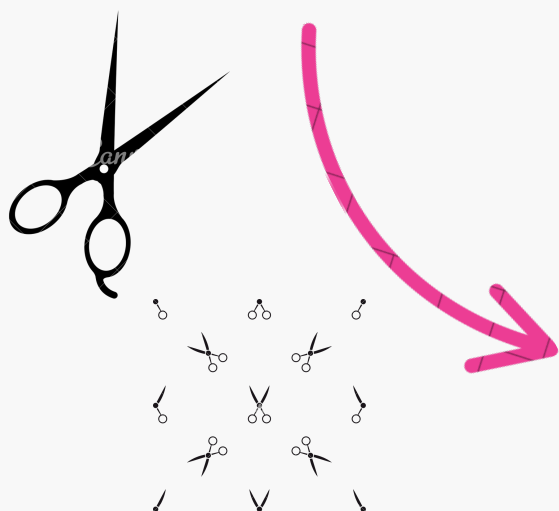
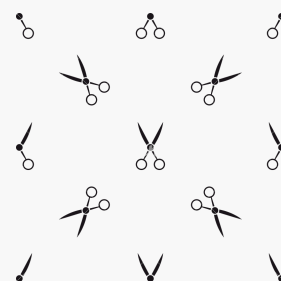
OUR WORKING CONDITIONS ARE YOUR LEARNING CONDITIONS!

Proposed financial cuts will significantly impact the student experience at Durham

Senior management are choosing to cut £20M in staff costs by 2026. That could mean more than 200 jobs by August, with more next year. But staff cuts are not inevitable. They are a choice.

Management have options, but instead of challenging wasteful spending elsewhere, they are targeting the staff who keep our university running.

If this year's cuts go ahead, we expect everyone's workloads will soar, staff morale will collapse, and even more job losses will follow.



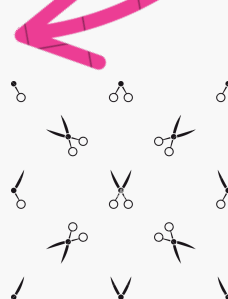
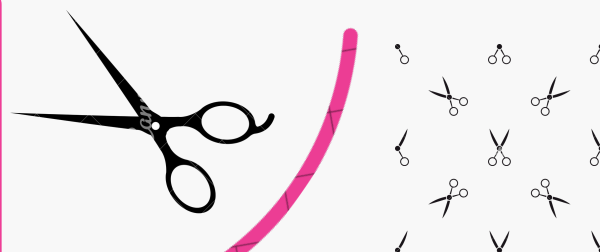
How these cuts will hurt students

Reducing academic and professional staff by £10 million in 2024/25 AND in 2025/26 will have significant negative impacts on teaching quality & student support services. This means less librarians, less IT staff and less staff to support you with non-academic issues. As a result, it will be more difficult to offer and take much longer to provide you with the quality support you need and deserve to enable you to have the best student experience possible. It will also reduce the range of degree programmes and module options available to you.

The cuts will harm accessibility and student diversity

The Durham 93% Club (representing state-educated students) has highlighted how financial instability discourages students from lower-income backgrounds from applying or continuing their studies.

Such cuts will also disproportionately impact students relying on financial support and accessible resources.



PLANNING YOUR DAY WITH MORE REALISTIC WALKING TIMES

AVERAGE WALKING TIMES BETWEEN DURHAM UNIVERSITY LOCATIONS

FROM:	Train Station	Market Place	Dunelm House	*Lower Mountjoy	Palace Green	Waterside Business School	Mill Hill Lane Business School	Sports & Wellbeing Park
TO:								
Train Station		11 min	18 min	27 min	14 min	12 min	34 min	39 min
Market Place	12 min		9 min	19 min	5 min	6 min	32 min	27 min
Dunelm House	17 min	9 min		10 min	7 min	13 min	23 min	18 min
*Lower Mountjoy	28 min	20 min	12 min		16 min	25 min	16 min	17 min
Palace Green	13 min	6 min	9 min	15 min		11 min	29 min	24 min
Waterside Business School	11 min	5 min	13 min	23 min	10 min		36 min	31 min
Mill Hill Lane Business School	42 min	36 min	28 min	19 min	32 min	42 min		35 min
Sports & Wellbeing Park	34 min	26 min	18 min	16 min	23 min	32 min	30 min	

*Lower Mountjoy = Bill Bryson Library for purposes of these estimates. The Lower Mountjoy site includes locations such as Physics, Engineering, Chemistry, the Teaching & Learning Centre, Calman Learning Centre, Education, and more. The additional locations at Lower Mountjoy are 3-6 minutes' walk from the Bill Bryson Library..

NOTE: all times are based on Google Maps estimates and associated with the shortest paved and lighted routes (not wooded, unlit, often unpaved paths and walkways which are sometimes shorter)

Those with the longest walks will be Durham University Business School students. The Accounting, Economics, and Finance Departments are based at Mill Hill Lane; Management & Marketing is based at Waterside. Classes for all departments are held at both locations (as well as other campus locations, often Lower Mountjoy). The time between class sessions is often as little as 15 minutes.

Courtesy of

Bluesky
@ducu.bsky.social



Instagram
@durhamucu